

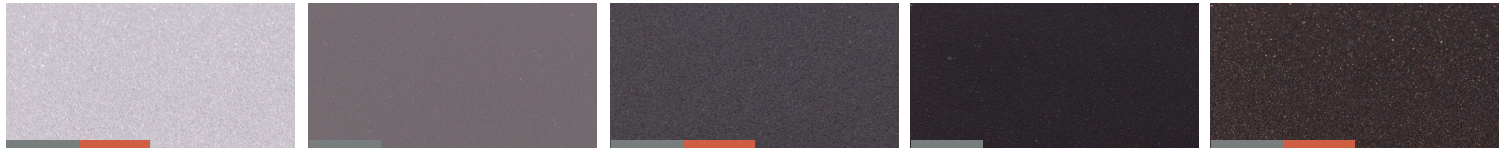


MATERIALS AND FINISHES

POWDER COAT COLOR CHART

Urban Accessories provides powder coating options for all cast and fabricated products. You can choose between one of the 11 original UA colors or one of our textured powders in the natural palette. All powders are high quality polyester based powders that meet our high standards for durability and surface finish.

NATURAL PALETTE



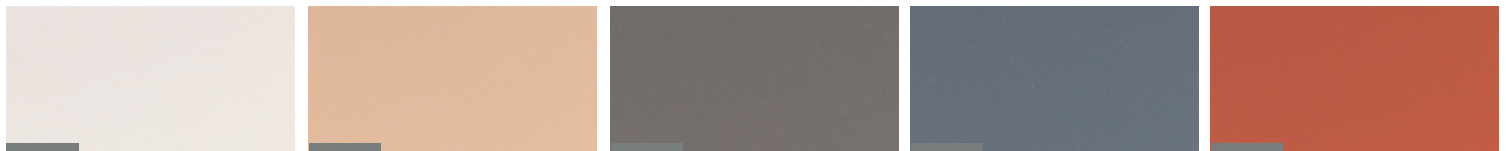
ALUMINUM

GRANITE

BASALT

ANTHRACITE

OILED BRONZE



SAND

SESAME

STONE

COVE

CANYON

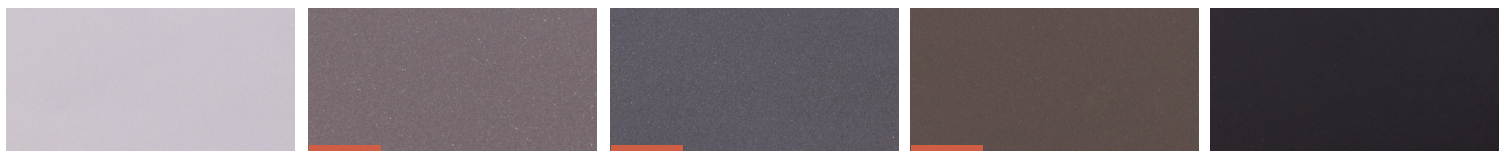


MOSS

LEMON

LAVENDER

STANDARD PALETTE



SILVER

FIRESTONE

CAST IRON GRAY

BRONZE BROWN

BLACK
MATTE | SEMI | GLOSS



HAGGARD BLUE

FLORENTINE BLUE

CAROUSEL RED

ROSE BISQUE

STORM BEIGE



PIONEER SQUARE
GREEN

— TEXTURED
— PEARLESCENT

DUE TO PRINTING AND SCREEN INCONSISTENCIES, COLORS SHOWN ARE BEST APPROXIMATIONS. PLEASE CONTACT UA OR YOUR LOCAL REP FOR PHYSICAL SAMPLES.



MATERIALS AND FINISHES

POWDER COAT COLOR CHART

POWDER COAT SPECIFICATIONS

All powder coated products are coated by certified applicators, in accordance with the following specifications, keeping the manufacturer's recommendation.

Part A. Application Standards

1. All parts are media blast prepared.
2. A high quality epoxy based primer is applied at 2.5 to 3 mils and cured.
3. Finish coat is applied at 2.5 to 3 mils and cured.

Part B. Recommended Maintenance

1. Atmospheric salinity and UV are the two main causes of degradation of powder coated finishes. All parts should be washed every six months with an automotive grade wash/wax to remove any salt build up and protect the finish from UV damage.

Part C. Limited Warranty

1. Powder coated surfaces are warranted for one year under the terms and limitations outlined in Urban Accessories standard limited warranty.

ADDITIONAL AND CUSTOM COLORS

In addition to the stock colors below we are able to provide custom color matched options for Pantone® and RAL® colors and other existing stock exterior powders. If a custom color is required please contact UA or your rep with full specifications such as powder manufacturer, color number, or color book color.