



OUTDOOR SHOWERS

Shower Series

MODEL M-PBF17

POOL AND BEACH SHOWER

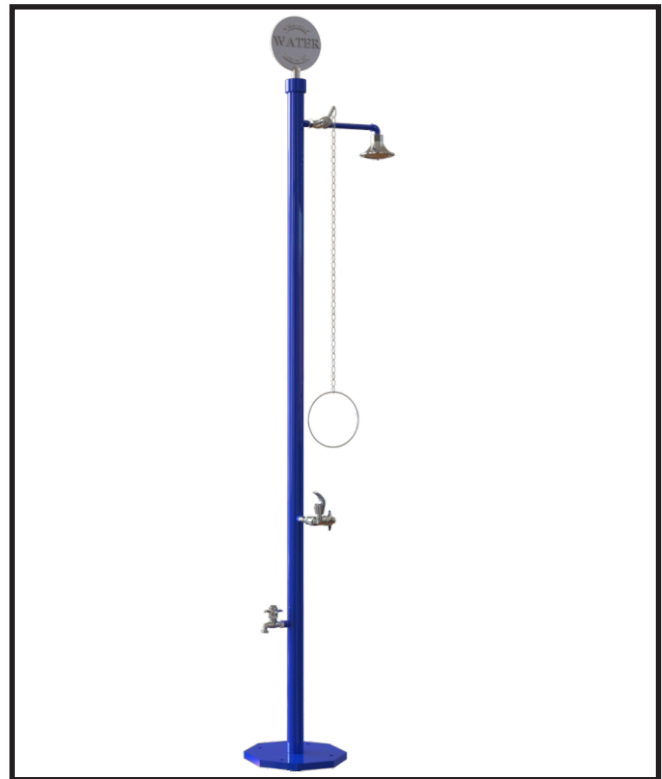
STANDARD FEATURES

- Self-closing bubbler
- Self-closing foot shower
- 32" pull chain operated self-closing shower valve
- Heavy duty, galvanized pipe construction, powder coated blue

SUGGESTED SPECIFICATIONS

Shower shall be Murdock model M-PBF17 pool and beach shower with pull chain self-closing valve. Shower shall include a chrome plated brass bubbler with self-closing valve and a rough chrome plated brass body foot wash with self-closing valve. Shower head shall be chrome plated brass. Unit shall be pre-piped and hydrostatically tested.

Construction shall be 2" schedule 80 galvanized steel pipe. Cast aluminum bottom plate shall have mounting holes for (4) 1/2" anchor bolts provided by others. Bottom inlet shall be 1" NPT. Unit shall be powder coated blue.



Standard Model: M-PBF17

MODEL:

(Must Specify)

- M-PBF15 Green Powder-Coated
 - M-PBF16 Red Powder-Coated
 - M-PBF17 Blue Powder-Coated (Shown)
- Custom color finishes available upon request*

OPTIONS

(additional costs may be incurred)

- Less bubbler
- Less foot shower

Please visit www.murdockmfg.com for most current specifications.



Member of
U.S. Green
Building
Council



Recyclable
Product

Complies with the
following standards:



MURDOCK MFG. • 15125 Proctor Avenue • City of Industry, CA 91746 USA
Phone 800-453-7465 or 626-333-2543 • Fax 626-855-4860 • www.murdockmfg.com

Member of
MORRIS GROUP
INTERNATIONAL

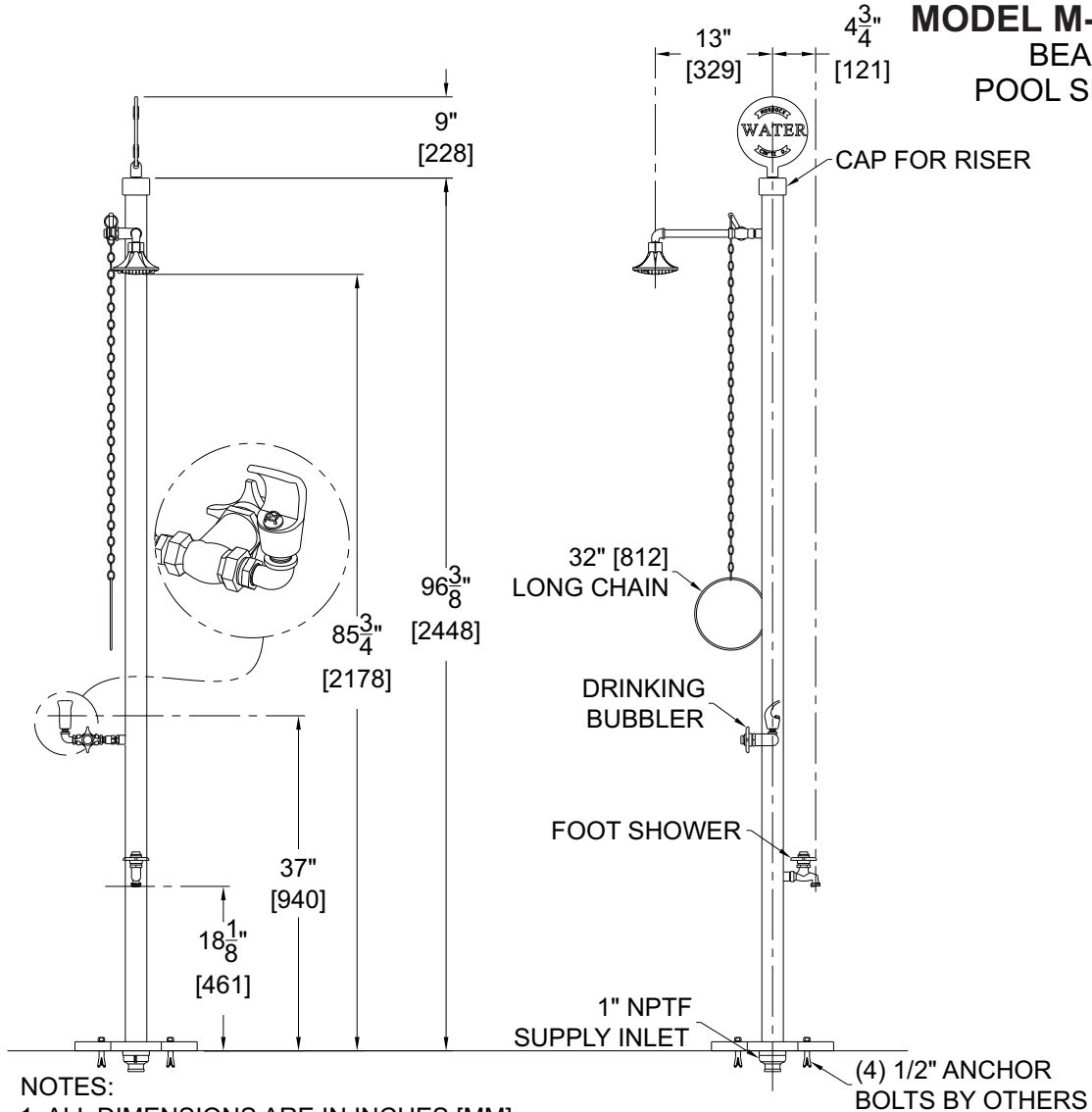


OUTDOOR SHOWERS

All dimensions are subject to manufactures tolerance of plus or minus 1/8" nominal and subject to change without notice. Murdock Mfg. assumes no responsibility for use of void or superseded data. Dimensions may change with the addition of optional accessories. Murdock Mfg.™, Member of Morris Group International™. Please visit www.Murdockmfg.com for most current specifications.

Shower Series

MODEL M-PBF17
BEACH AND
POOL SHOWER



- NOTES:
 1. ALL DIMENSIONS ARE IN INCHES [MM].
 2. MOUNTING HARDWARE IS PROVIDED BY THE INSTALLER.

Murdock Mfg.™ warrants that its products are free from defects in material or workmanship under normal use and service for a period of one year from date of shipment. Murdock's liability under this warranty shall be discharged solely by replacement or repair of defective material, provided Murdock™ is notified in writing within one year from date of shipment, F.O.B. Industry, California.

SELECTION SUMMARY & APPROVAL FOR MANUFACTURING	Model Number & Options _____	Quantity _____	All dimensions are subject to manufactures tolerance of plus or minus 1/8" nominal and subject to change without notice. Murdock assumes no responsibility for use of void or superseded data. Dimensions may change with the addition of optional accessories. Murdock Mfg.™, Member of Morris Group International™. Please visit www.murdockmfg.com for most current specifications.
	Company _____		
	Contact _____	Title _____	
	Signature (Approval for Manufacturing) _____	Date _____	

MURDOCK MFG. • 15125 Proctor Avenue • City of Industry, CA 91746 USA
 Phone 800-453-7465 or 626-333-2543 • Fax 626-855-4860 • www.murdockmfg.com

