

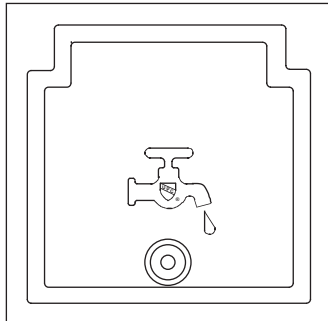


HYDRANTS

NON-FREEZE GROUND HYDRANT

BOX TYPE WITH INTEGRAL FLASHING FLANGE AND CLAMP

FUNCTION: A Hydrant with a hinged covered box, for positive protection against freezing when buried outside or in unheated areas and the closing valve is located below the frost line. Used in watertight floor construction where an integrally cast flashing flange is required to receive and secure the waterproofing membranes. When hydrant is shut off water is drained from the casing through the drain hole in the valve housing. The locking cover prevents unauthorized use.



B (Depth of Bury) = 02(610), 03(915), 04(1220), 05(1525), 06(1830), 07(2135) or 08(2438) Feet
 *B = 9 1/2" (240) When Specified 5810F-SAP
 *B = 9 1/2" (240) When Specified 5811F-SAP

NOTES: 1. Recommended Box-out 10-1/2"(265) x 10-1/2"(265)
 2. All hydrants are manufactured with "NO-LEAD" brazing rings and USDA approved lubricants.

NOTE: Addition of vacuum breaker will not allow draining of the casing. Smith is not responsible for any casings that burst or related incidents if the hydrant is supplied with a vacuum breaker.

REGULARLY FURNISHED:

Bronze Non-Freeze Ground Hydrant with "T" Handle Key, Bronze Hydrant Box with Flashing Flange and Clamp. Inlet Size Furnished as Indicated by Figure Number Selected.

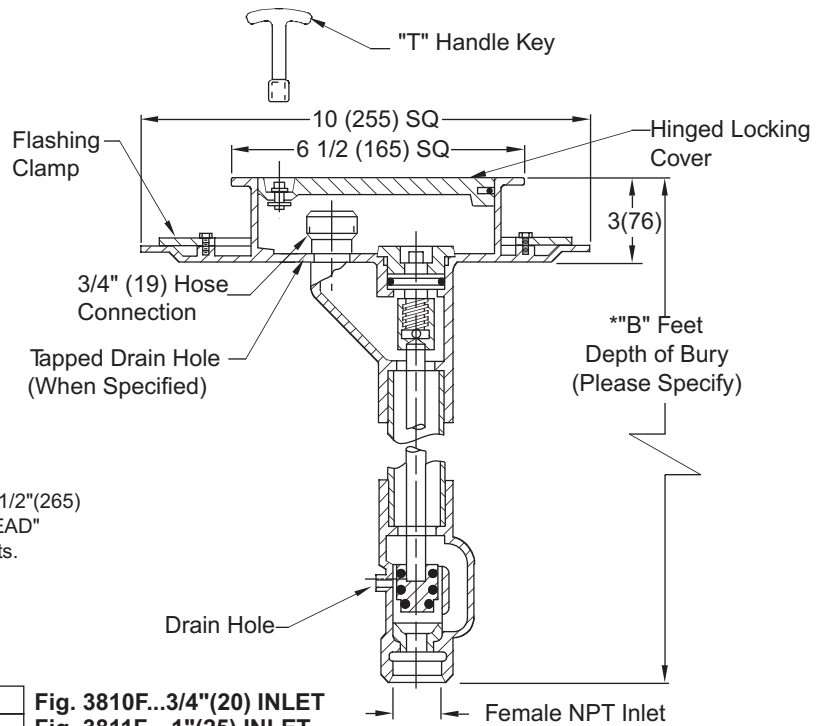


Fig. 3810F... 3/4"(20) INLET
 Fig. 3811F... 1"(25) INLET

VARIATIONS:

- 1"(25) Hose Connection Adapter -HC1
- Less Drain Hole -LD
- 1/8"(3) NPT Drain Hole in Box -N
- 1/8"(3) NPT Drain Hole in Valve Housing -NV
- Mild Climate -SAP
- Less Flashing Clamp -LFC
- "Water" Cast on Cover -W

OPTIONAL MATERIALS:

- Nickel Bronze Box -NB
- Polished Bronze Box -PB

NOTE: Dimensions shown in parentheses are in millimeters.

TECHNICAL DATA

Non-Freeze Ground Hydrants are supplied with a special valve housing which prevents freezing of hydrant during non-use periods. The valve housing must be installed below the frost line which prevails for the area of installation. The valve housing has a drain hole which drains the casing when the hydrant is shut off. In effect, there is no water in the casing during non-use periods. Since water from the drain hole is normally allowed to drain into the ground, the valve housing should be set in a bed of gravel. Water drained from the casing can then seep into the ground.

Some locations which require Non-Freeze Ground Hydrants cannot tolerate water draining from the drain hole. Examples are parking garages, plazas and roof decks used for recreational purposes. Often in these types of applications the valve housing will protrude into a finished area which is not subject to freezing temperatures. To eliminate the problem of water drainage in this type of installation, Smith can supply a tapped drain hole in the hydrant box and a tapped drain hole in the valve housing. Through these tapped drain holes, water accumulation in the box and the water from the valve housing drain hole can be piped to a suitable drain.

Please visit www.murdock-supersecur.com for most current specifications.

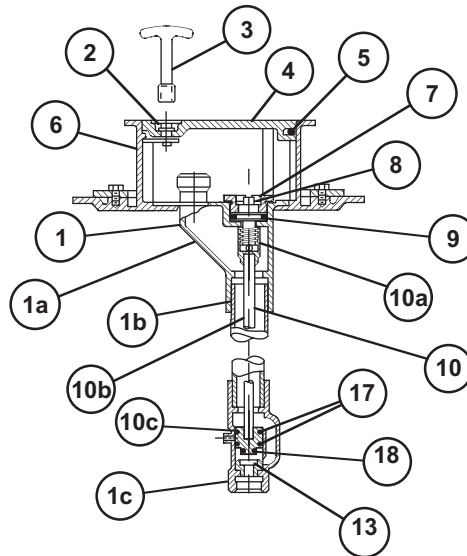
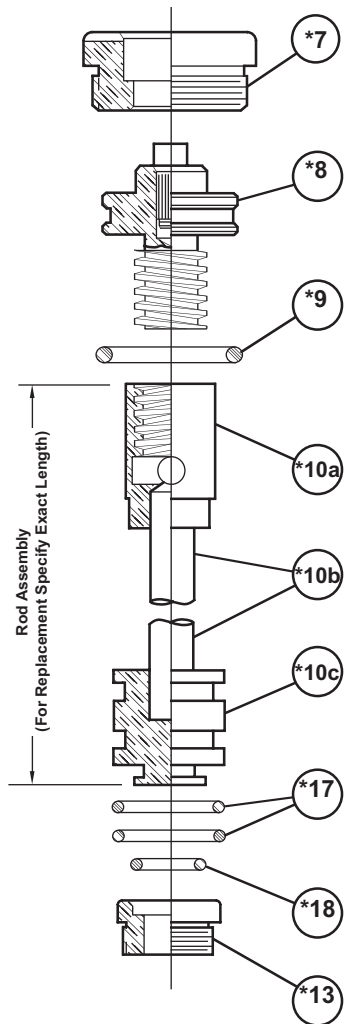
MURDOCK-SUPER SECUR A Member of Acorn Engineering's Family of Companies
 15125 Proctor Avenue • City of Industry, CA 91746 USA • Phone 800-453-7465 or 626-333-2543 • Fax 626-855-4860



HYDRANTS

Hydrant Part List

NON-FREEZE
GROUND HYDRANT



▲THESE REPLACEMENT PARTS AVAILABLE IN HPRK-41

MAINTENANCE INSTRUCTIONS

1. Shut off water supply.
2. Remove face nut.
3. Pull stem out for complete access to all working parts.
4. Check all working parts for replacement.
5. Replace complete stem assembly and face nut.

*These parts are accessible from face of hydrant by removing face nut.

REPLACEMENT PARTS LIST - SPECIFY FIGURE NO. WHEN ORDERING

No.	DESCRIPTION	No.	DESCRIPTION
1	Head/Casing Assembly	8	Operating Screw
1a	Head	9	Operating Screw "O" Ring
1b	Casing	10	Operating Rod Assembly
1c	Valve Housing	10a	Coupling
2	Locking Device	10b	Rod
3	Key	10c	Plunger
4	Cover	13	Removable Seat
5	Hydrant Cover Hinge Pins (2)	17	Plunger "O" Ring
6	Box	18	Plunger "O" Ring
7	Face Nut		

ONE YEAR LIMITED WARRANTY - Parts are warranted for one (1) year from date of shipment.

SELECTION SUMMARY & APPROVAL FOR MANUFACTURING

All dimensions are nominal and subject to manufacturer's change without notice.
Murdock-Super Secur assumes no responsibility for use of void or suspended data.
© Copyright 2009, Murdock-Super Secur, a division of Acorn Engineering Company.
Please visit www.murdock-supersecur.com for most current specifications.

Model Numbers & Options _____ Quantity _____
Company _____ Date _____
Contact _____ Title _____
Approval for Manufacturing/Signature _____